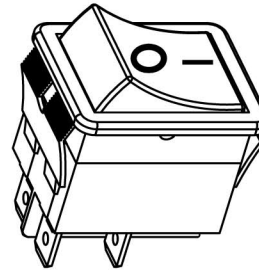
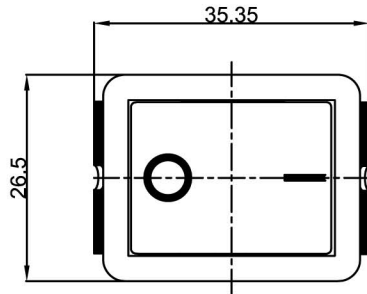


LR



RATING: 20A 125VAC(UL)

22A 250VAC(ENEC/CQC)

Degree of protection: IP55

Contact Resistance: 20m Ω (Max)

Insulation Resistance: DC 500V 100M Ω (Min)

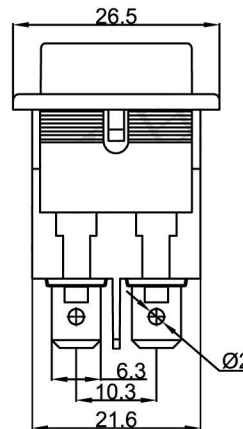
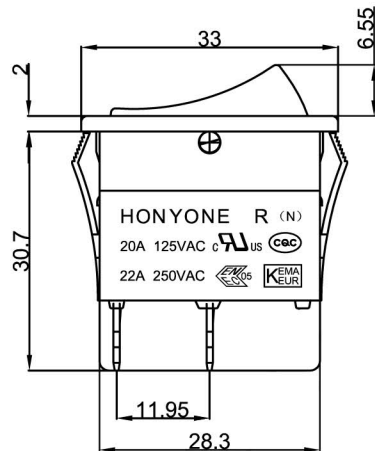
Dielectric Strength: AC1500V 1 minute

Operating Force: 500±200gf

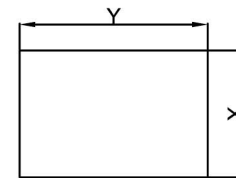
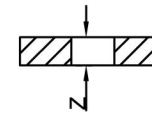
Mechanical Life: 50,000 cycles

Load Life: 10,000 cycles

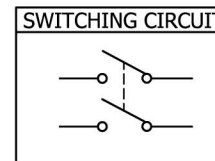
Operating Temperature: 0°C~85°C



CUT-OUT



Z	X	Y
0.70~1.25	22.0~22.2	30.0~30.2
1.25~2.00	22.0~22.2	30.2~30.4
2.00~3.00	22.0~22.2	30.4~30.6



MATERIAL:

Body: Nylon66, UL rated: 94V-2 min

Actuator: Nylon66, UL rated: 94V-2 min

Terminal: Brass, silver or tin plated

LR-210-C5N-BR-N
01.086.0124